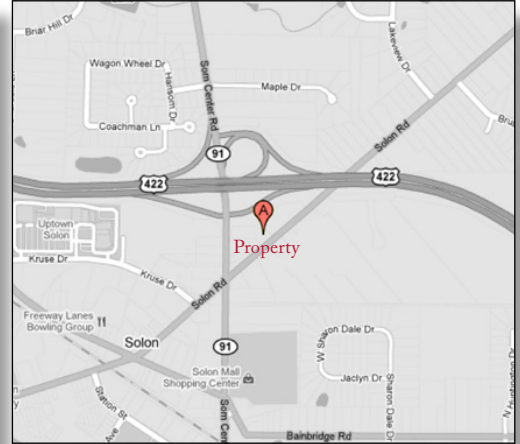


34125 Solon Road | Solon, Ohio 44139



© Google - map data © 2011 Google

Location:

34125 Solon Rd is a single-story building located at the intersection of SR-91 and Solon Rd with immediate access to US-422 and is minutes from I-271 and I-480 interchanges.

Business Development:

The City of Solon's commitment to its business community is apparent in both its Economic Development department and a premier Chamber of Commerce. Membership in the Solon Chamber of Commerce includes hundreds of large and small businesses that employ over 19,000 workers and represent industrial, commercial, retail, professional and home-based businesses.

In recent years, Solon was named 'business friendly' by a Greater Cleveland Growth Association program that represents economic development agencies in seven Northeast Ohio counties.

Features:

BUILDING: 6,400 sq ft

AVAILABLE: 6,400 sq ft

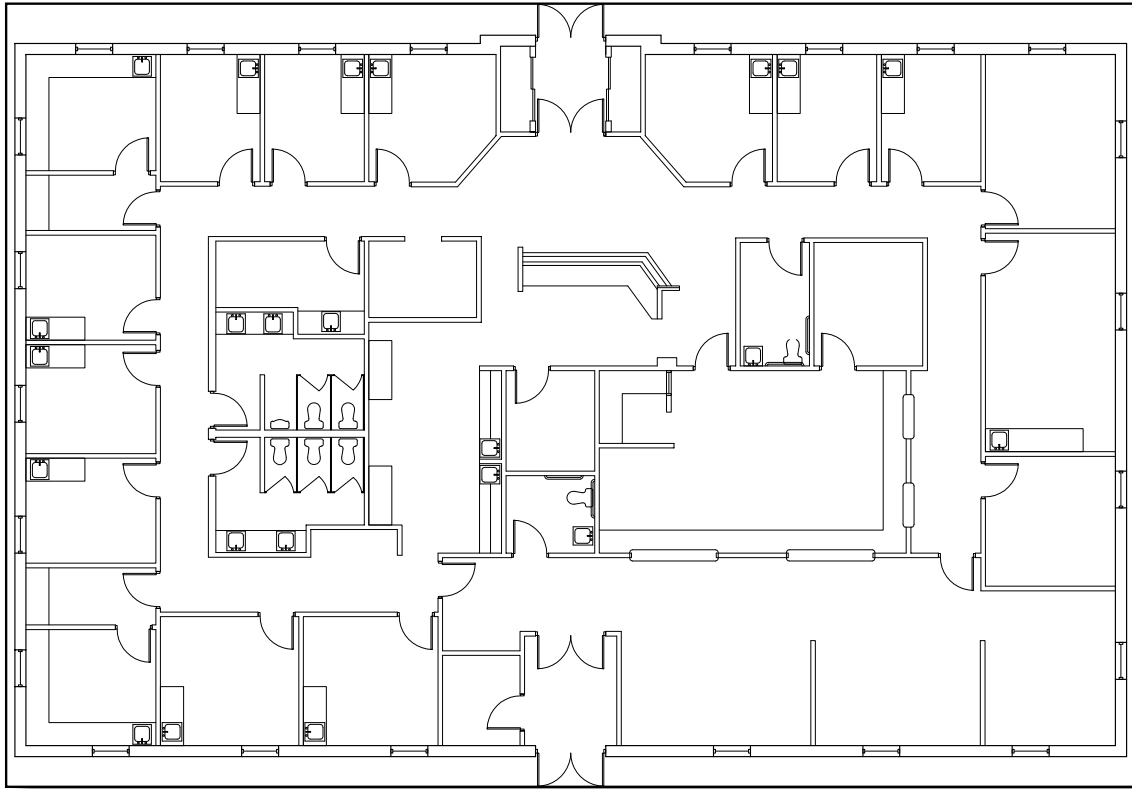
PARKING: Abundant surface parking for tenants and visitors is provided.



32000 Solon Road • Solon, Ohio 44139
t 440.248.7770 • f 440.248.4671
www.davisdevelopmentgroup.com

Contact for more information:
440.248.7770

34125 Solon Road | Solon, Ohio 44139



Area Services:

Restaurants:	Panera Bread Hunan's Rusty Bucket LongHorn Steakhouse KFC/Taco Bell Senorita Bonita's (a family-style Mexican restaurant)
Lodging:	Hampton Inn (103 rooms) Homewood Suites (86 extended-stay suites) SpringHill Suites (120 suites) Towne Place by Marriott (112 suites)
Entertainment:	Solon Commons 16 (movie theater) Play Day Café

Demographics:

With its estimated 23,728 residents and the collective cooperation of its superior schools, businesses and civic organizations, The City of Solon is a top-ranked, award-winning community.

Median age	41.6
Median family income	\$110,125
Average single-family home value	\$295,464
Estimated daytime population	37,300
School district enrollment	5,210
Distance to I-271 & I-480	3 miles
Parks & recreation areas	9

Contact for more information:

440.248.7770