

6200 Building

6200 Enterprise Parkway | Solon, Ohio 44139



© Google - map data © 2010 Google

General Information:

6200 Building is a multi-use office/retail building in the Solon Commons Development, a 26 acre provider of business and entertainment services. The development is home to hotels, movie theater, restaurants and other services.

Location:

Enterprise Pkwy is one mile from the Harper Rd exit from US-422 and minutes from I-271 and I-480 interchanges.

Business Development:

The City of Solon's commitment to its business community is apparent in both its Economic Development department and a premier Chamber of Commerce. Membership in the Solon Chamber of Commerce includes hundreds of large and small businesses that employ over 19,000 workers and represent industrial, commercial, retail, professional and home-based businesses.

In recent years, Solon was named 'business friendly' by a Greater Cleveland Growth Association program that represents economic development agencies in seven Northeast Ohio counties.

Features:

BUILDING: 22,000 sq ft

AVAILABLE: 6,444 sq ft

PARKING: Abundant



32000 Solon Road • Solon, Ohio 44139
t 440.248.7770 • f 440.248.4671
www.davisdevelopmentgroup.com

Contact:

MICHAEL BROWN
Asset Manager

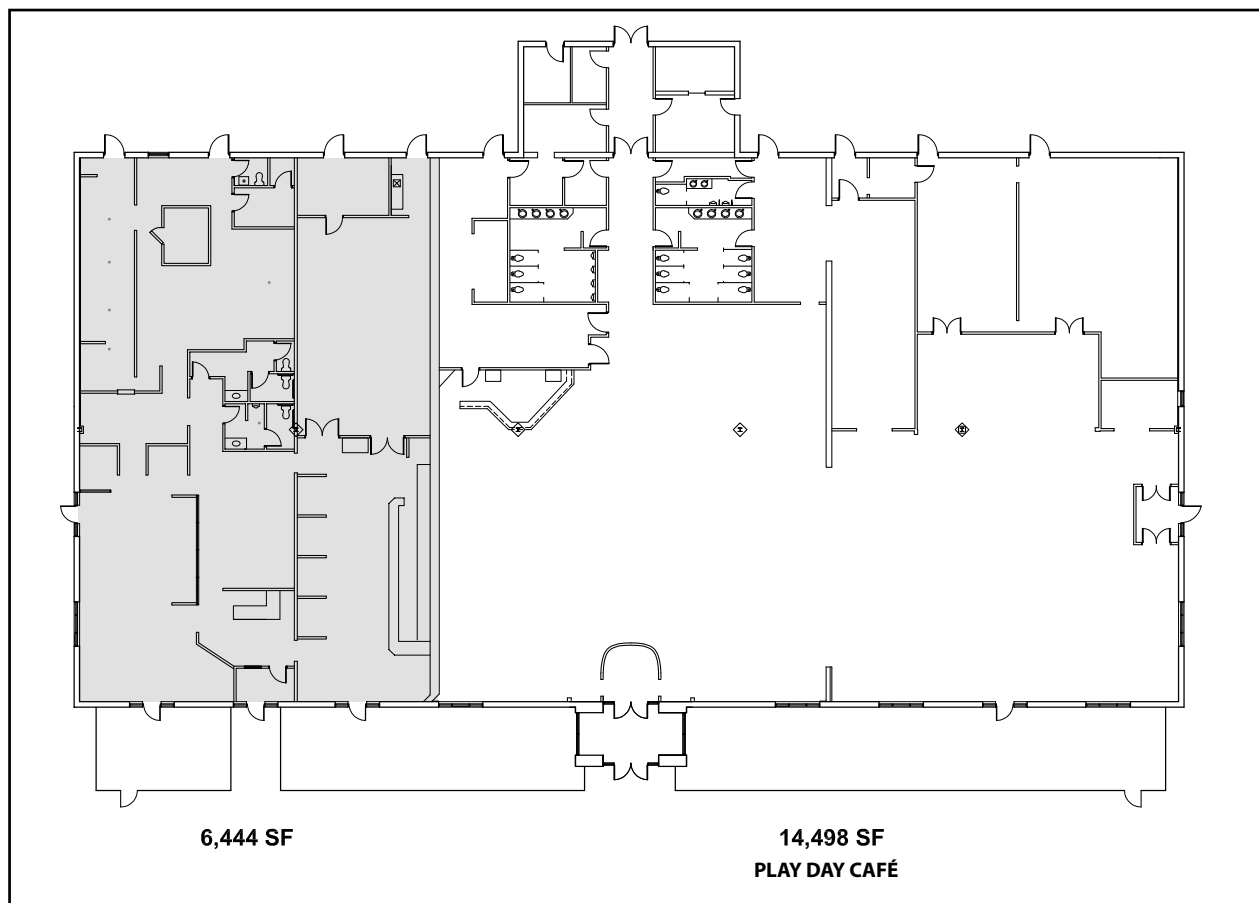
440.248.7770 x 129 (office)

440.781.6712 (cell)

michael_brown@davisentities.com

6200 Building

6200 Enterprise Parkway | Solon, Ohio 44139



Area Services:

Restaurants:	LongHorn Steakhouse KFC/Taco Bell Senorita Bonita's (a family-style Mexican restaurant)
Lodging:	Hampton Inn (103 rooms) Homewood Suites (86 extended-stay suites) SpringHill Suites (120 suites) Towne Place by Marriott (112 suites)
Entertainment:	Solon Commons 16 (movie theater) Play Day Café

Demographics:

With its estimated 23,728 residents and the collective cooperation of its superior schools, businesses and civic organizations, The City of Solon is a top-ranked, award-winning community.

Median age	41.6
Median family income	\$110,125
Average single-family home value	\$295,464
Estimated daytime population	37,300
School district enrollment	5,210
Distance to I-271 & I-480	3 miles
Parks & recreation areas	9

Contact:

MICHAEL BROWN, Asset Manager
440.248.7770 x 129 (office)
440.781.6712 (cell)
michael_brown@davisentities.com