

Senorita Bonita's - Restaurant

6000 Enterprise Parkway | Solon, Ohio 44139



© Google - map data © 2010 Google

General Information:

6000 Enterprise Pkwy is a single-use building with an outside patio, occupied by Senorita Bonita's, located at the entrance of the 26 acre, mixed-use Solon Commons Development, off of Rt 43.

Location:

Enterprise Pkwy is one mile from the Harper Rd exit from US-422 and minutes from I-271 and I-480 interchanges.

Business Development:

The City of Solon's commitment to its business community is apparent in both its Economic Development department and a premier Chamber of Commerce. Membership in the Solon Chamber of Commerce includes hundreds of large and small businesses that employ over 19,000 workers and represent industrial, commercial, retail, professional and home-based businesses.

In recent years, Solon was named 'business friendly' by a Greater Cleveland Growth Association program that represents economic development agencies in seven Northeast Ohio counties.

Features:

BUILDING: 5,400 sq ft

PARKING: Abundant surface parking for customers is provided



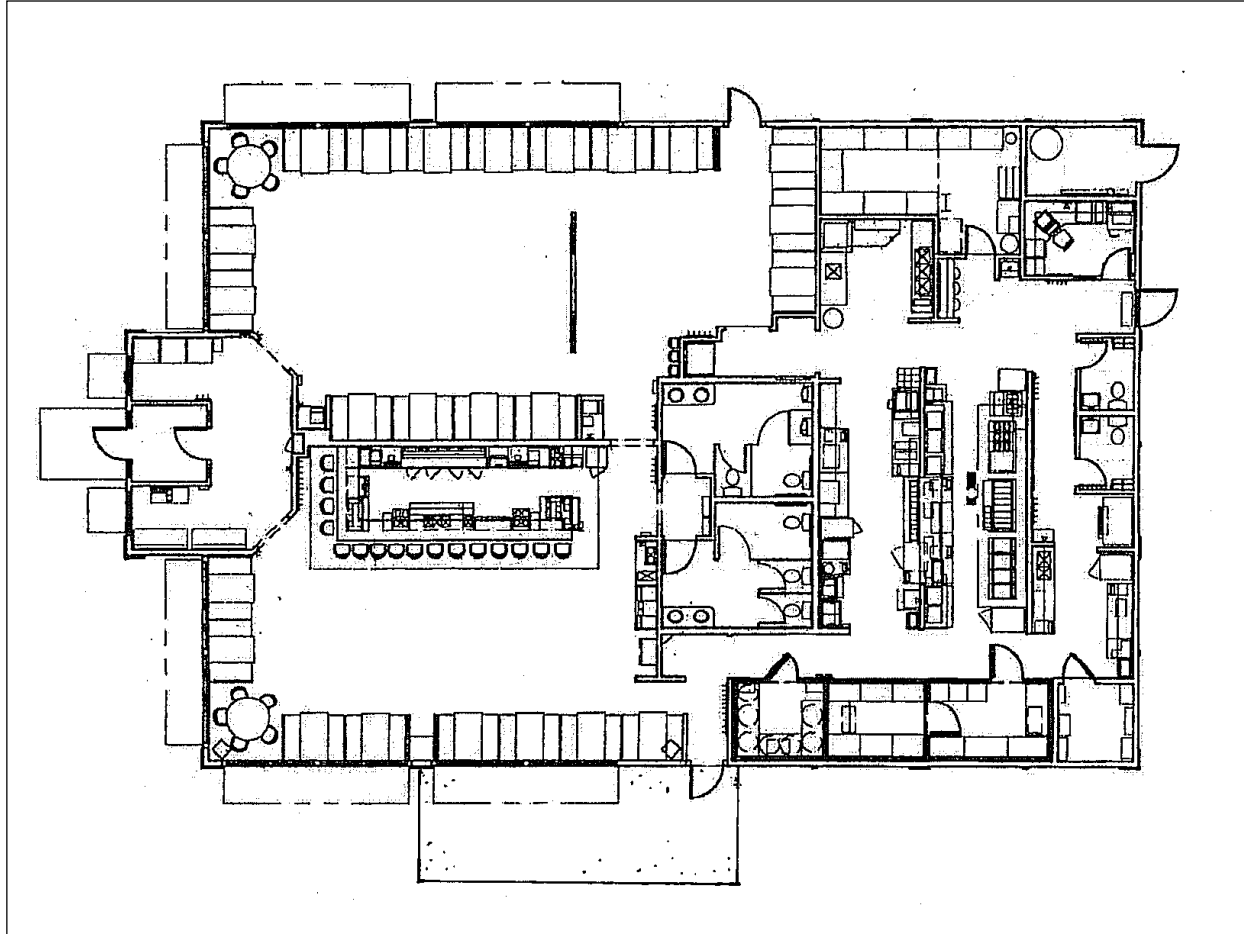
32000 Solon Road • Solon, Ohio 44139
t 440.248.7770 • f 440.248.4671
www.davisdevelopmentgroup.com

Contact:

MICHAEL BROWN
Asset Manager
440.248.7770 x 129 (office)
440.781.6712 (cell)
michael_brown@davisentities.com

Senorita Bonita's - Restaurant

6000 Enterprise Parkway | Solon, Ohio 44139



Area Services:

Restaurants:	LongHorn Steakhouse KFC/Taco Bell Senorita Bonita's (a family-style Mexican restaurant)
Lodging:	Hampton Inn (103 rooms) Homewood Suites (86 extended-stay suites) SpringHill Suites (120 suites) Towne Place by Marriott (112 suites)
Entertainment:	Solon Commons 16 (movie theater) Play Day Café
Other services:	Talmer Bank

Demographics:

With its estimated 23,728 residents and the collective cooperation of its superior schools, businesses and civic organizations, The City of Solon is a top-ranked, award-winning community.

Median age	41.6
Median family income	\$110,125
Average single-family home value	\$295,464
Estimated daytime population	37,300
School district enrollment	5,210
Distance to I-271 & I-480	3 miles
Parks & recreation areas	9

Contact:

MICHAEL BROWN, Asset Manager
440.248.7770 x 129 (office)
440.781.6712 (cell)
michael_brown@davisentities.com