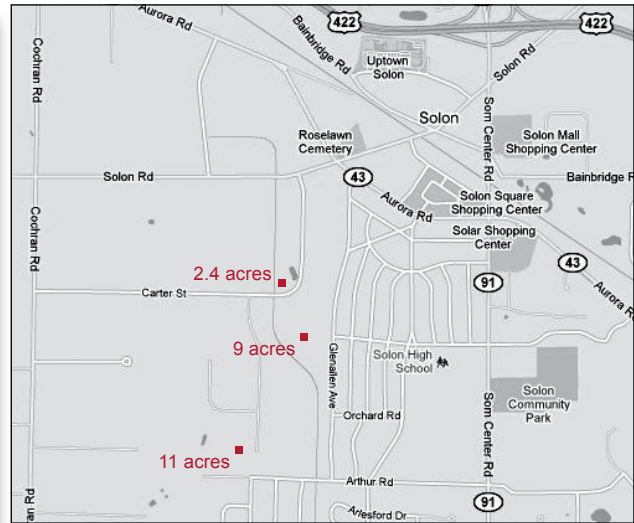
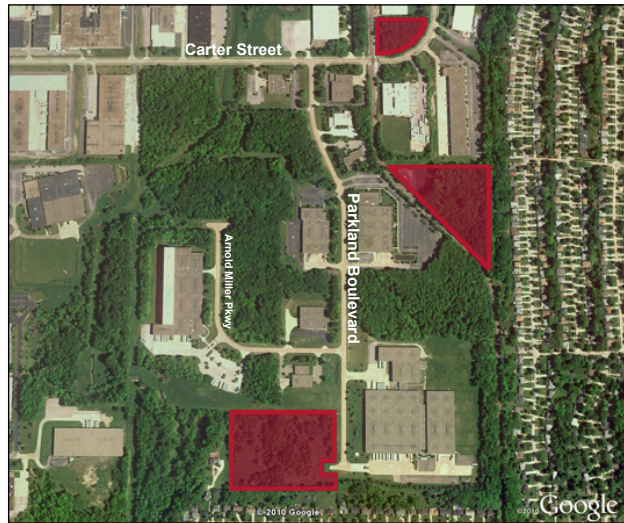


# Land Sites Available

Solon, Ohio 44139



© Google - map data © 2010 Google

## Properties Available:

- 2.4 acres – Davis Industrial Parkway
- 9 acres – Davis Industrial Parkway
- 11 acres – Parkland Boulevard

## General Information:

Conveniently located off Solon and Cochran Roads with easy access to US-422 and minutes from I-271 and I-480 interchanges.

Developer offers complete design and construction services.

**Utilities:** Available in street.

**Corporate neighbors:** Cosmax USA, Permatex, Arrow Components, Reinhart Food Service, Vintage Wine, Distributor Services

**Business development:** The City of Solon's commitment to its business community is apparent in both its Economic Development department and a premier Chamber of Commerce. Membership in the Solon Chamber of Commerce includes hundreds of large and small businesses that employ over 19,000 workers and represent industrial, commercial, retail, professional and home-based businesses.



32000 Solon Road • Solon, Ohio 44139  
t 440.248.7770 • f 440.248.4671  
www.davisdevelopmentgroup.com