

Centre Pointe

34055 Solon Road | Solon, Ohio 44139



© Google - map data © 2010 Google

General Information:

Centre Pointe is a two-story, full-service office building managed by Davis Development Group, Inc., a premier development, construction management and property management firm.

Location:

Located at the intersection of SR-91 (SOM Center) and Solon Rd, 34055 Solon Rd has immediate access to US-422 and is minutes from I-271 and I-480 interchanges.

Business Development:

The City of Solon's commitment to its business community is apparent in both its Economic Development department and a premier Chamber of Commerce. Membership in the Solon Chamber of Commerce includes hundreds of large and small businesses that employ over 19,000 workers and represent industrial, commercial, retail, professional and home-based businesses.

Features:

BUILDING: 33,000 USF

AVAILABLE: 0 USF

LEASE TYPE: Net

PARKING: Abundant surface parking for tenants and visitors is provided.

LOCATION: Immediate access to US-422 and minutes from I-271 and I-480 interchanges. Nationally recognized restaurants within walking distance.



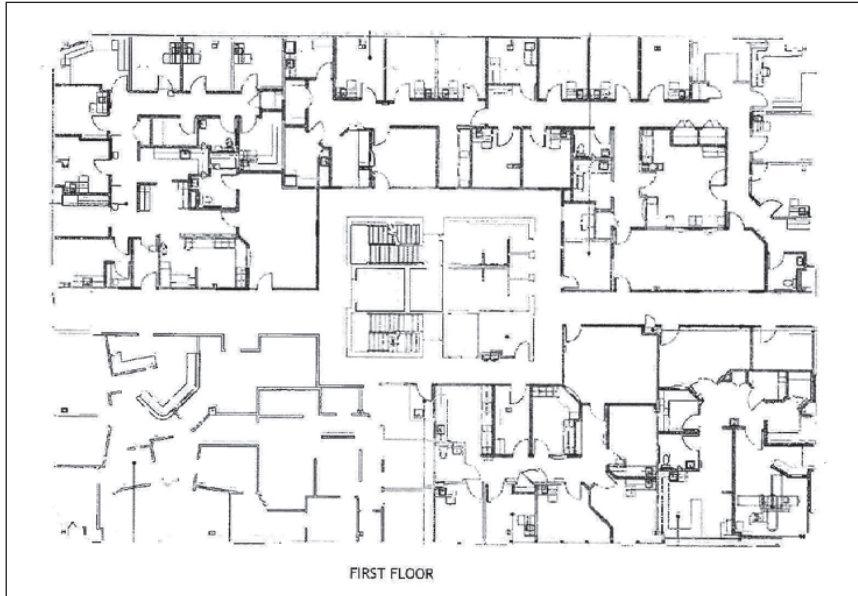
32000 Solon Road • Solon, Ohio 44139
t 440.248.7770 • f 440.248.4671
www.davisdevelopmentgroup.com

Contact:

TODD FELDER
Director of Asset Management
Office: 440.248.7770 x129
Cell: 440.781.6712
Todd_Felder@davisentities.com

Centre Pointe

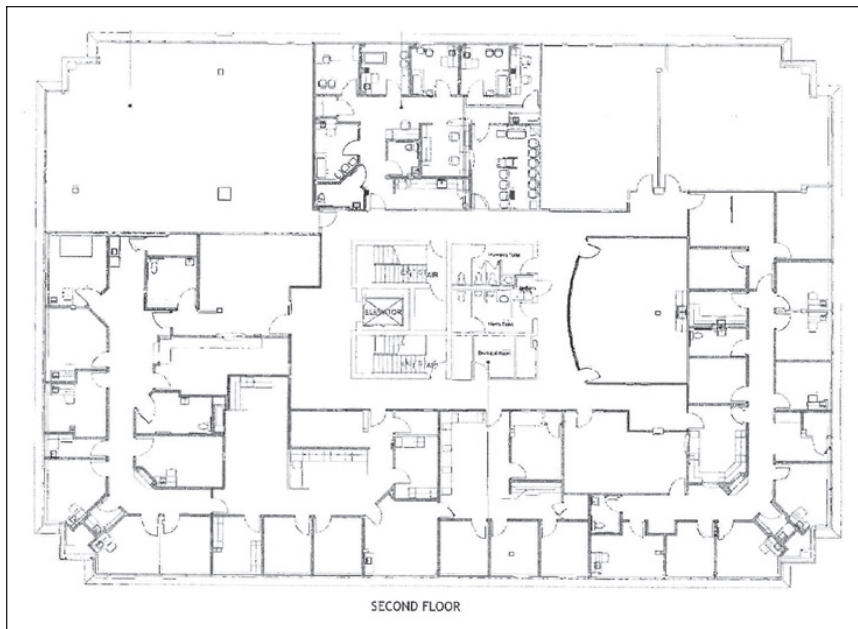
34055 Solon Road | Solon, Ohio 44139



Available for Lease:

AREAS
Fully Leased

LEASE TYPE: Net



Available for Lease:

AREAS
Fully Leased

LEASE TYPE: Net

Contact:

TODD FELDER, *Director of Asset Management*

Office: 440.248.7770 x129

Cell: 440.781.6712

Todd_Felder@davisentities.com